

## Optional Items



SmartBOX™ Cutting Accessory



Air Compressor Unit



Rotary Attachment



SmartAIR Nozzle



SmartMEMORY™



SmartGUARD™



Roll to Roll Autofeeder

Specification		Spirit
Work Area		25 x 18 in. (640 x 460 mm) Extendable to 29 x 18 in. (740 x 460 mm)
Max. Part Size (W x L x H)	All doors closed	30 x 19 x 7.2 in. (762 x 482.6 x 182 mm)
	All doors open	30 x ∞ x 6.8 in. (762 x ∞ x 172 mm)
Table Size		31.1 x 20.9 in. (790 x 530 mm)
Dimensions		44.3 x 28.3 x 39.6 in. (1125 x 720 x 1005 mm)
Laser Source		12 to 100W 10.6-µm sealed CO <sub>2</sub> Laser / 20W & 60W 9.3-µm sealed CO <sub>2</sub> Laser
Cooling		Air-cooled, Operating environment temperature 15°-30°C (60°-86°F)
Drive		Closed-loop DC Servo Control
Throughput*		245.5 in <sup>2</sup> / hr (1584 cm <sup>2</sup> / hr)
Throughput* with SmartACT™ Enabled		283.4 in <sup>2</sup> / hr (1828.8 cm <sup>2</sup> / hr)
Speed Control		Adjustable from 0.1-100% of 60 IPS (Up to 16 color-linked speed settings per job)
Power Control		Adjustable from 1-100% (Up to 16 color-linked power settings per job)
Distance Accuracy		0.254 mm or 0.1% of move, whichever is greater
Z-Axis Movement		Automatic
Focus Lens		Standard 2.0", optional 1.5", 2.5", & 4.0" available
Resolution (DPI)		Available 125, 250, 300, 380, 500, 600, 760, 1000, 1500
Computer Interface		Standard printer port and USB 2.0** port
Compatible Operating Systems		MS Windows
Memory Buffer		32 MB standard
Display Panel		4-line LCD display showing current file name, total working time, laser power, engraving speed, file(s) loaded into memory buffer, setup and diagnostic menus
Safety		Class 2 for red pointer
Operation Voltage		100-240 Volt AC Auto Switching for 30 Watt and below; 200-240 Volt AC Auto Switching for 40 Watt and above models
Power Consumption		700W - 3300W
Air Exhaust System		External exhaust system is required, one 4" connection on the back of the machine

\* Speed does not equal to throughput. See dealer or visit www.GCCworld.com for more details.

\*\* File transmission at USB 2.0 Full Speed rate

‡ Specifications are subject to change without prior notice.



Authorized Dealer



www.GCCworld.com



GCC Headquarters 4F, No.236, Fude 2nd Rd., Xixi Dist., New Taipei City 22151, Taiwan 886-2-6616-6692 Fax: 886-2-2694-6875  
 GCC China No. 1, Chen Fang Road, Yushan, Kunshan, Jiangsu 215300, China 86-512-5726-1515 Fax: 86-512-5726-1518  
 GCC Europe B.V. Egplantenbaan 43-45, 2908 LV, Capelle a/d IJssel, The Netherlands 31-10-458-9367 Fax: 31-10-451-9874  
 GCC America, Inc. 323 Paseo Tesoro, Walnut, CA 91789, USA 1-909-718-0246 Fax: 1-909-718-0251  
 US & Canada Only Tel/Fax: 1-888-284-5211



Laser Engraver

# GCC LaserPro Spirit

## Ingenious and Versatile Designs



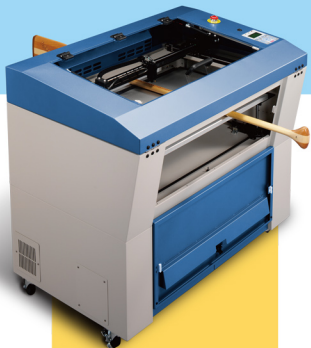
# Spirit

- 25" x 18" (640 X 460 mm) working area
- 60 IPS high working speed
- Patented SmartACT™ motion control technology innovation to reduce ramping and shorten running time
- Plug-and-play standard USB port for rapid data transmission
- Closed-loop DC servo motor for precise movement of laser carriage
- Patented SmartGUARD™ fire alarm device to provide maximum operation safety
- Pass-through front and rear doors to accommodate long working pieces
- Truelmage (patent pending) features to assure homogeneous engraving output



Laser Engraver

# GCC LaserPro Spirit

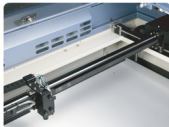


## GCC LaserPro Spirit

GCC LaserPro Spirit is designed with the operator in mind and carrying various innovative features, reliable mechanics, and excellent output quality. GCC LaserPro Spirit is the missing piece in your operations puzzle, putting you on track for continued growth in your engraving and cutting business!

### Reliable Motion System

Systematic and reliable motion system embedded with strong mechanical framework and accurate servomotor control technology to deliver superb output quality under rapid movement.



### SmartPIN Auto Focus

The plug-and-play probe design makes focusing a one-touch process and provides the accuracy and precision required for optimum quality in the lasing process.

### Pass-through Front and Rear Doors

Convenient front and rear door design enables loading of extremely long working pieces.



### SmartLID™

An innovative lid that opens from both ends allowing easier access for daily maintenance.

### SmartACT™ (Patented)

Ground-breaking technology that reduces the ramping process, the job running time, which translates into higher productivity.

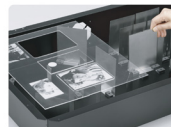
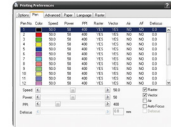


### Emergency Stop

Big red button located on the top of the machine allows operators to stop the laser and the motion carriage immediately to provide a highly safe operational environment.

### Innovative Software Features

Various user friendly features such as SmartCENTER, Defocus by pen, allows users to reduce set up time and make easy adjustments to achieve marvelous output quality.



### SmartBOX™ (Optional)

An innovative technology that integrates the ventilation box with a honeycomb table. The result is not only a precise cut with sharp edges, but also a clean laser table to work on.