

## Optional Items



Roll to Roll Autofeeder\* AAS Contour Cutting Device (Patented)\* Multi-purpose Integrated SmartBOX™ External Control Interface Board Fume Extraction System External Signal Indicator

\* For CO<sub>2</sub> laser only

Specification	Spirit GLS Hybrid
Work Area	34 x 24 in. (860 x 610 mm) Extendable to 38 x 24 in. (960 x 610 mm)
Max. Part Size (W x L x H)	All doors closed 39 x 25 x 7 in. (990 x 635 x 177 mm)
	All doors open 39 x ∞ x 7 in. (990 x ∞ x 177 mm)
Table Size	40.3 x 27.7 in. (1025 x 705 mm)
Dimensions	53.7 x 34.6 x 39.7 in. (1365 x 880 x 1010 mm)
Laser Source	Single CO <sub>2</sub> laser: 30 to 100W 10.6-μm / 20W & 60W 9.3-μm sealed CO <sub>2</sub> Laser Single Fiber laser: 20 / 30 / 50W fiber laser source 10.6-μm CO <sub>2</sub> and Fiber dual laser tubes
Cooling	Air-cooled, Operating environment temperature 15°- 30°C (60°- 86°F)
Drive	Closed-loop DC servo control
Maximum Speed*	80 IPS
Throughput*	260.9 in <sup>2</sup> / hr (1683 cm <sup>2</sup> / hr)
Throughput* with SmartACT™ Enabled	322.1 in <sup>2</sup> / hr (2078 cm <sup>2</sup> / hr)
Speed Control	Adjustable from 0.1-100% (Up to 16 color-linked speed settings per job)
Power Control	Adjustable from 0-100% (Up to 16 color-linked power settings per job)
Engraving Capability	256-level gray scale image processing capability
Distance Accuracy	0.254 mm or 0.1% of move, whichever is greater
Z-Axis Movement	Automatic
Focus Lens	Single CO <sub>2</sub> laser: Standard 2.0", optional 1.5", 2.5", & 4.0" available Single Fiber laser: Standard 4.0", optional 2.0" Dual Lasers: Standard 3.0"
Resolution (DPI)	Available 125, 250, 300, 380, 500, 600, 760, 1000, 1500
Computer Interface	10 Base-T Ethernet, Full speed 2.0 USB
Compatible Operating Systems	MS Windows
Display Panel	4-line LCD display showing current file name, total working time, laser power, engraving speed, file(s) loaded into memory buffer, setup and diagnostic menus
Safety	Class I Laser Product Compliant with EN60825 Class 3R Laser Product Compliant with CDRH 2006/42/EC Machinery Directive Compliance
Operation Voltage	Below 80Watt, 100-240V AC Auto Switching; 80Watt and above, 200-240V AC Auto Switching
Power Consumption	800W- 3600W
Air Exhaust System	External exhaust system is required, one 4" connection on the back of the machine

\* Speed does not equal to throughput. See dealer or visit [www.GCCworld.com](http://www.GCCworld.com) for more details.  
\* Original GLS maximum power consumption 4400W is not correct. It is fixed now by EE.  
\* Specifications are subject to change without prior notice.

## Authorized Dealer



▶ For single fiber laser and dual lasers configurations.

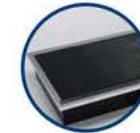
▶ For single CO<sub>2</sub> laser configuration.

[www.GCCworld.com](http://www.GCCworld.com)

The Epitome of Excellence & Flexibility

# GCC LaserPro Spirit GLS Hybrid

Upgrade your business with CO<sub>2</sub> & Fiber Hybrid laser technology



## Spirit GLS Hybrid

- 38" x 24" (960 mm x 610 mm) extra large working area
- CO<sub>2</sub>, Fiber, or dual lasers hybridized in one laser system
- QSM (Quality Speed Mode) maintains 100% engraving quality while operating at maximum speed
- Patented SmartACT™ motion control technology increases your productivity by reducing ramping process and job running time
- Drag and engrave feature assures remarkably easy and fast set-ups
- High speed DC motor runs up to 80IPS for precise and rapid movement of the laser carriage
- Reliable DuraGuide motion system with reinforced Kevlar belt delivers superb output quality
- Pass-through front and rear doors to accommodate long working pieces





Laser Engraver

# GCC LaserPro Spirit GLS Hybrid



## GCC LaserPro Spirit GLS Hybrid

The LaserPro Spirit GLS Hybrid is the flagship model of the award winning LaserPro Spirit line of laser engravers. In succession to GCC LaserPro worldwide accolades features, Spirit GLS Hybrid further upgrade its capability to CO<sub>2</sub> & Fiber Hybrid laser option in one system, engraving, cutting, marking on organic and metal pieces all possible now.

### CO<sub>2</sub> & Fiber Hybrid Laser Option

GCC Hybrid technology allows to install CO<sub>2</sub> & Fiber dual lasers in one system to expand your business from organic materials processing to direct metal engraving.



### Pass-through Front and Rear Doors

Convenient front and rear door design enables loading of extremely long working pieces.

### DuraGuide

Systematic and reliable motion system embedded with strong mechanical framework, reinforced Kevlar belts, and accurate servomotor control technology to deliver superb output quality under rapid movement.

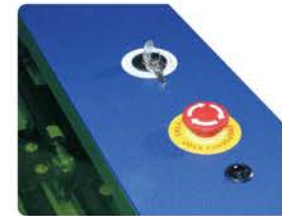
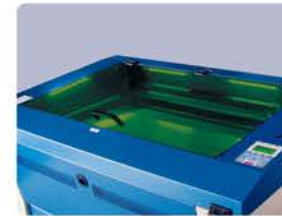


### SmartPIN AutoFocus (Patented)

The plug-and-play probe design makes focusing a one-touch process and provides the accuracy and precision required for optimum quality in the lasing process.

### SmartLIGHT

LED light modules illuminate the working area showing the progress and details of each job.



### Key Switch & Emergency Stop

Key switch safeguards the machine from unauthorized use. Prominent emergency button located on the top of the machine allows operators to stop the laser and the motion carriage immediately to provide a safe operating environment.

### SmartACT™ (Patented)

Ground-breaking technology that reduces the ramping process, the job running time, which translates into higher productivity.



### Innovative Software Features

Various user friendly features such as SmartCENTER, Defocus by pen, allow users to reduce set up time and make easy adjustments to achieve marvelous output quality.